

SORT OUT III

Perspectives on 18-Month Results

SORT OUT III Perspectives

- **Concerns with SORT OUT III Methodology:** The SORT OUT III study uses an unconventional methodology that raises questions regarding the reproducibility and viability of the results
- **Inconsistency of Data for Cypher DES:** SORT OUT III shows unexpectedly low rates and inconsistent data for Cypher compared with nearly every other trial utilizing the Cypher stent
- **SORT OUT III Results Are Short-Term Only:** The long-term deficiencies of Cypher demonstrated in multiple studies are not addressed by the short-term focus of SORT OUT III
- **Consistency of Data for Endeavor DES:** While the SORT OUT III data are inconsistent for Cypher, the Endeavor outcomes in SORT OUT III reinforce the low and durable event rates for the Endeavor stent

SORT OUT III

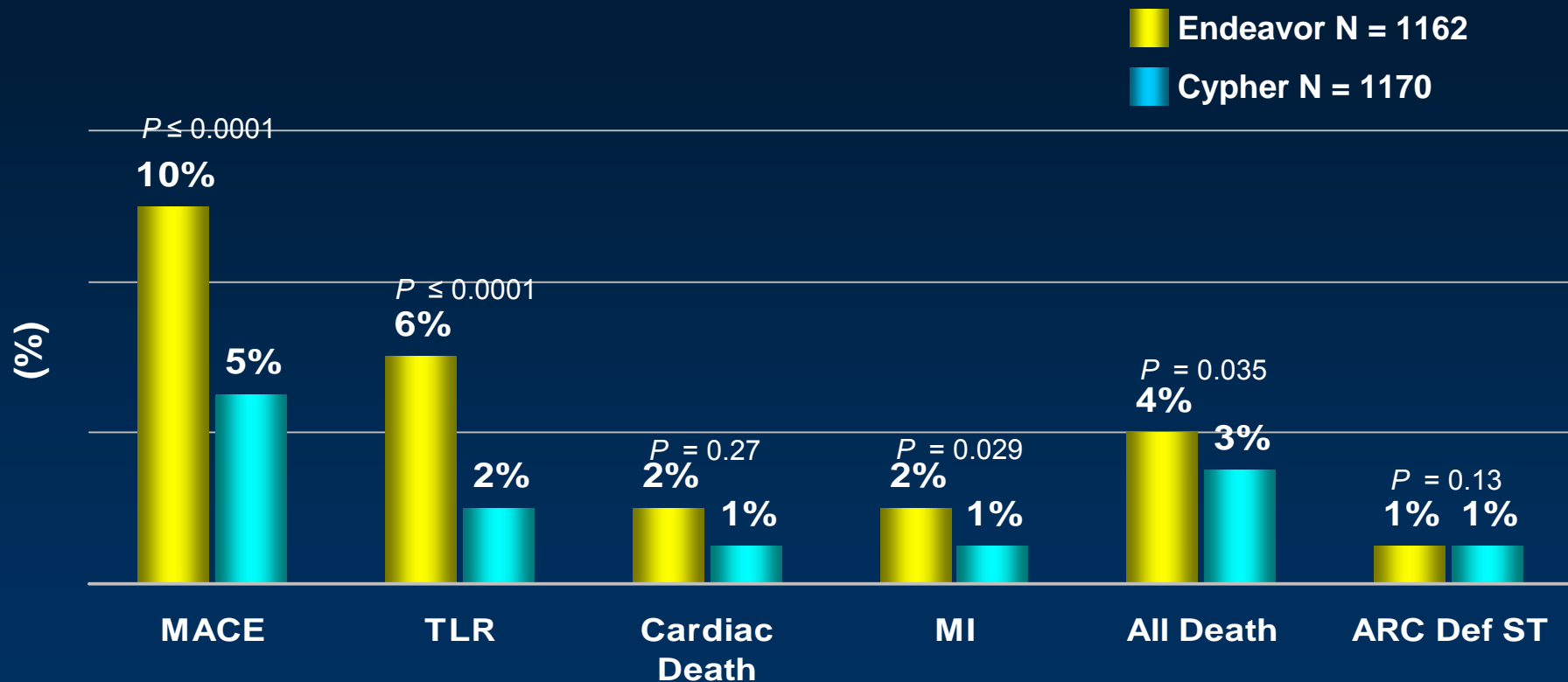
Questionable Trial Methodology

1. Positioned as a randomized “real-world” study yet nearly 60% (3344) of eligible patients were excluded in the analysis
2. Unlike controlled trials with rigorous patient follow-up, SORT OUT III is dependent on patient records from a national database
3. Investigators themselves—not an independent clinical events committee—determined and verified stent thrombosis (ST), target lesion revascularization (TLR), myocardial infarction (MI) and restenosis
4. Procedure-related MIs were not captured, which may introduce bias because other studies utilizing these two stents have demonstrated a high rate of periprocedural MIs with Cypher and a low rate with Endeavor¹
5. Differences in patient adherence to DAPT regimens were not reported despite the potential effect on safety outcomes

¹ In-Hospital MI rates: Cypher 2.3%, BMS 1.5% (SIRIUS Trial); Cypher 3.5%, Endeavor 0.6% (ENDEAVOR III Trial)

SORT OUT III

Event Rates at 18 Months



- The MACE and MI rates in SORT OUT III exclude periprocedural MI
- In ENDEAVOR III procedural MI = Cypher 3.5% vs. Endeavor 0.6% ($p = 0.042$); therefore the impact on the MACE and MI rates in SORT OUT III is unknown

Cypher: SORT OUT III TLR

Inconsistent Clinical Evidence



¹ Rasmussen K et al. Lancet, Published Online March 15, 2010

² Galloe AM et al., JAMA, 299:4 pp. 409-416, 2008.

³ Klaus V et al., TCT 2009

⁴ Räber L et al., TCT2009

⁵ Weisz G et al., JACC, 53 pp. 1488-1497, 2009.

⁶ Caixeta A et al., JACC, 54 pp. 894-902, 2009.

Cypher: SORT OUT III MACE

Inconsistent Clinical Evidence



¹ Rasmussen K et al. Lancet, Published Online March 15, 2010

² Galloe AM et al., JAMA, 299:4 pp. 409-416, 2008.

³ Klaus V et al., TCT 2009

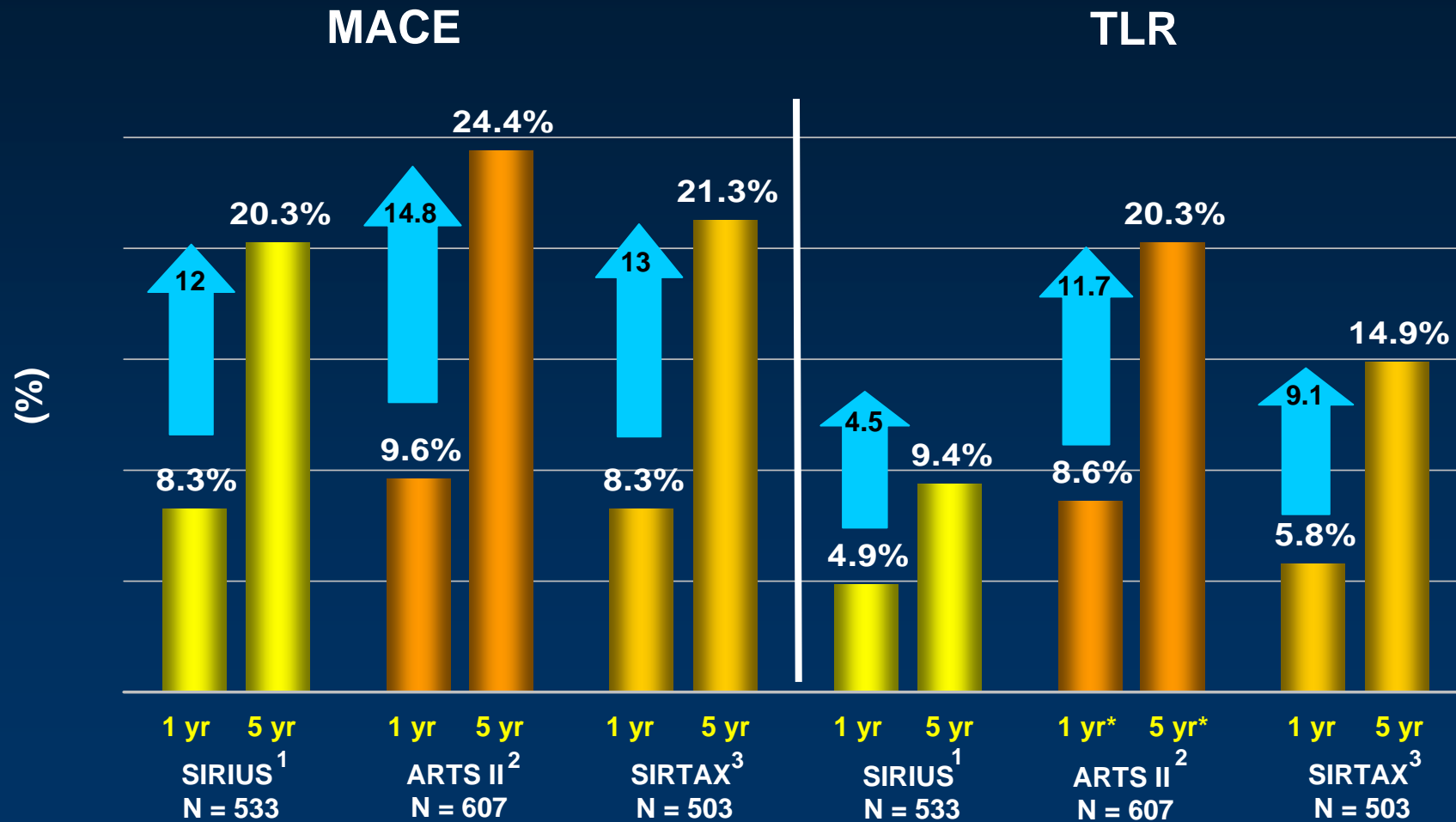
⁴ Räber L et al., TCT2009

⁵ Weisz G et al., JACC, 53 pp. 1488-1497, 2009.

⁶ Caixeta A et al., JACC, 54 pp. 894-902, 2009.

Cypher: Long-Term Endpoint Increases

MACE and TLR Increase from 1 – 5 Yr



¹ Weisz G et al., JACC, 53 pp. 1488-1497, 2009.

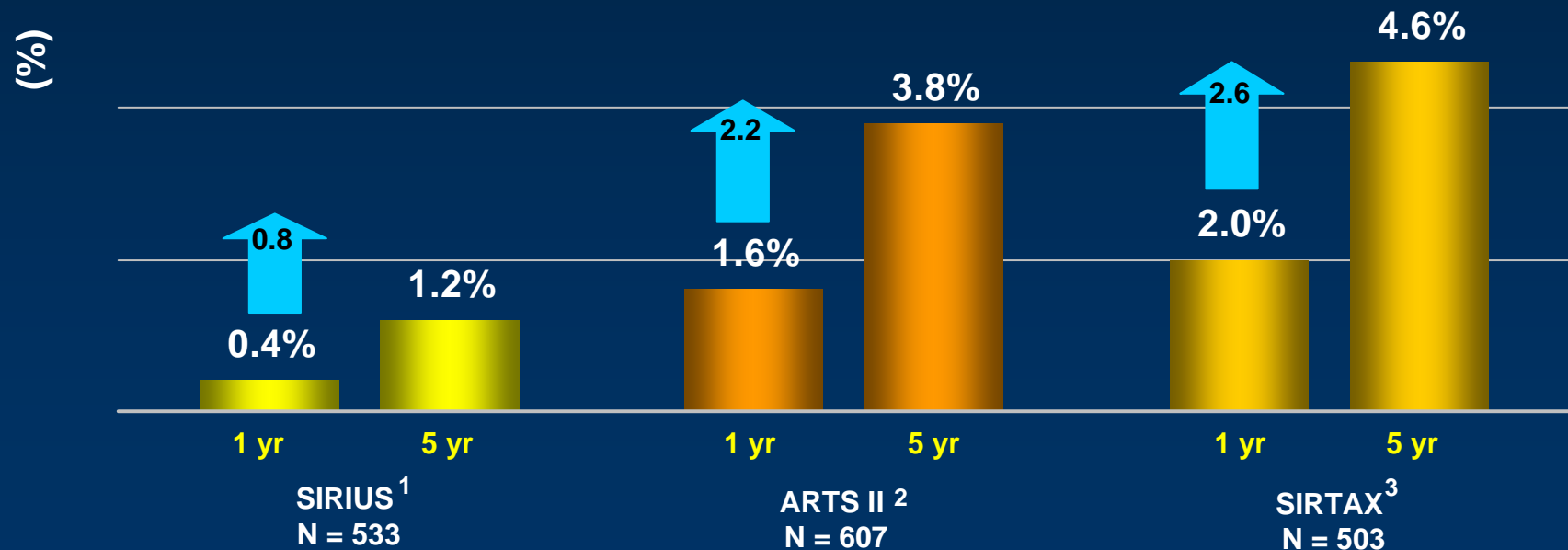
² Serruys P et al., EuroInterv, 1 pp. 147-156, 2005. Serruys P et al., JACC, 55 pp. 1093-1101, 2010.

³ Räber L et al., TCT2009

* Total revascularization

Cypher: Long-Term Endpoint Increases

ARC Definite ST Increases from 1 – 5 Yr



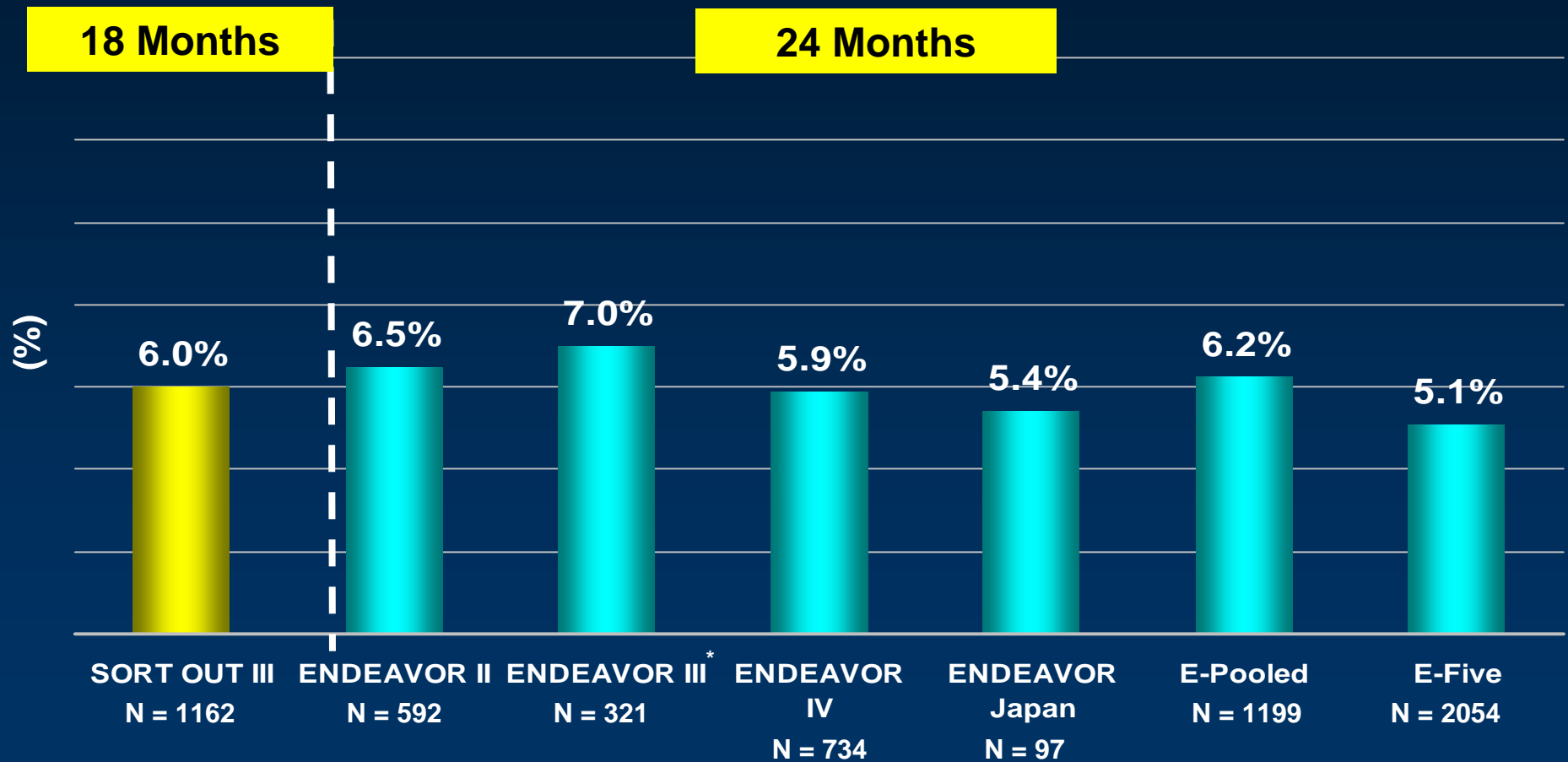
¹ Weisz G et al., JACC, 53 pp. 1488-1497, 2009.

² Serruys P et al., JACC, 55 pp. 1093-1101, 2010.

³ Räber L et al., TCT2009

Endeavor: SORT OUT III TLR

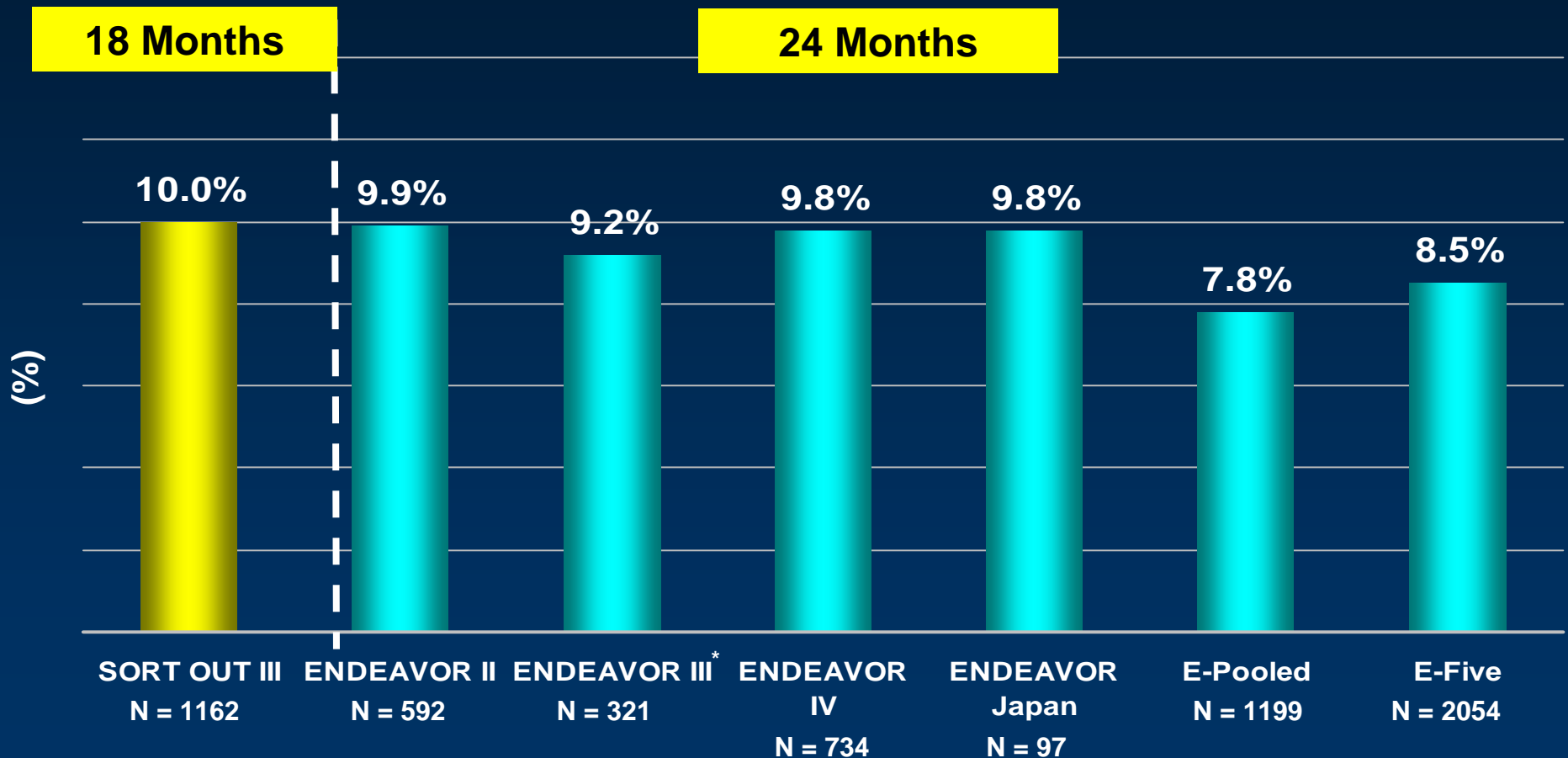
Consistent Clinical Evidence



* ENDEAVOR III included angiographic follow-up in all patients.
ENDEAVOR Pooled Analysis: E I (5 yr), E II (5 yr), E II CA (5 yr), E III (5 yr), E IV (3 yr) and E pK (3 yr).

Endeavor: SORT OUT III MACE

Consistent Clinical Evidence

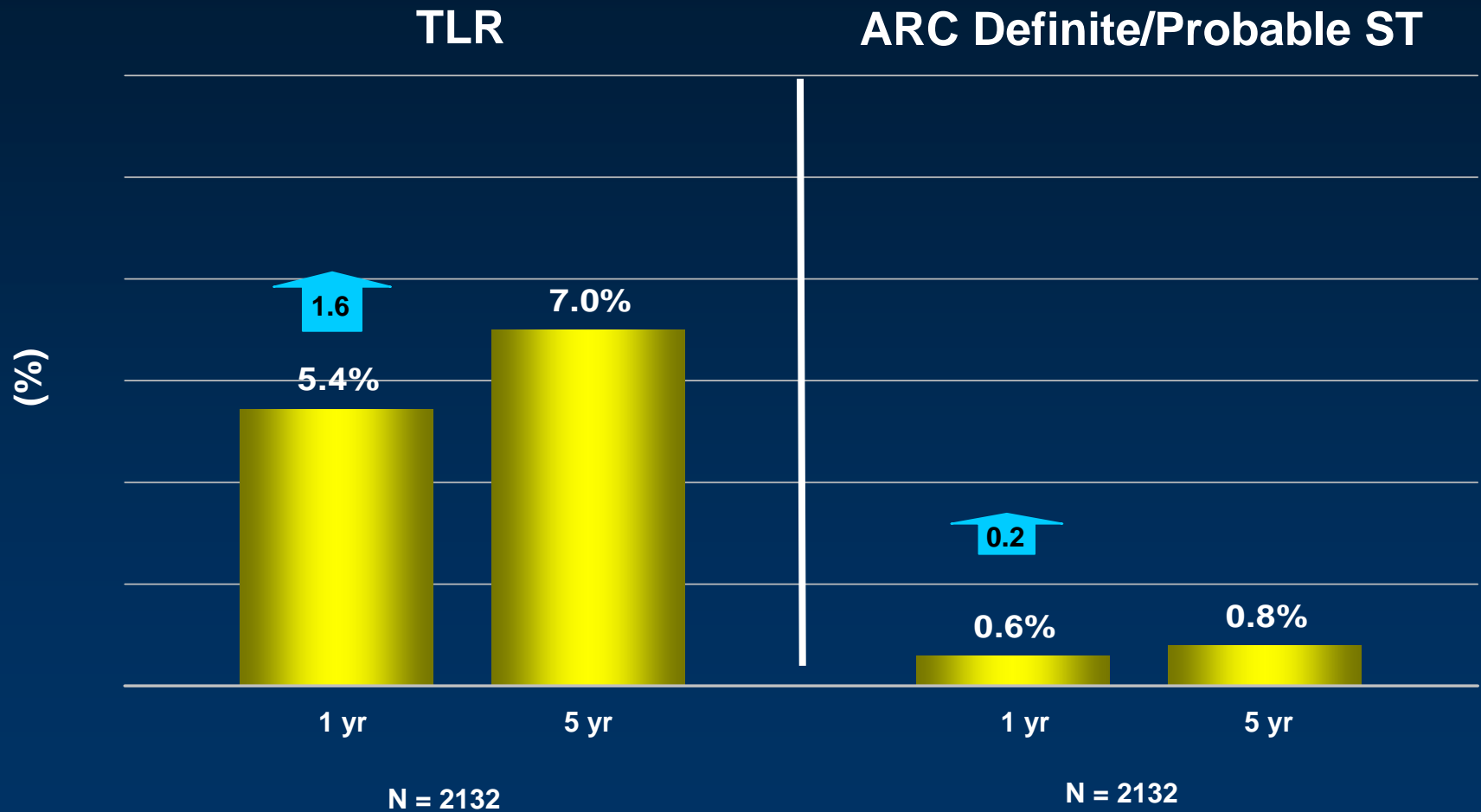


* ENDEAVOR III included angiographic follow-up in all patients.

ENDEAVOR Pooled Analysis: E I (5 yr), E II (5 yr), E II CA (5 yr), E III (5 yr), E IV (3 yr) and E pK (3 yr).

ENDEAVOR Pooled Analysis

TLR and ARC Def/Prob ST From 1 – 5 Yr

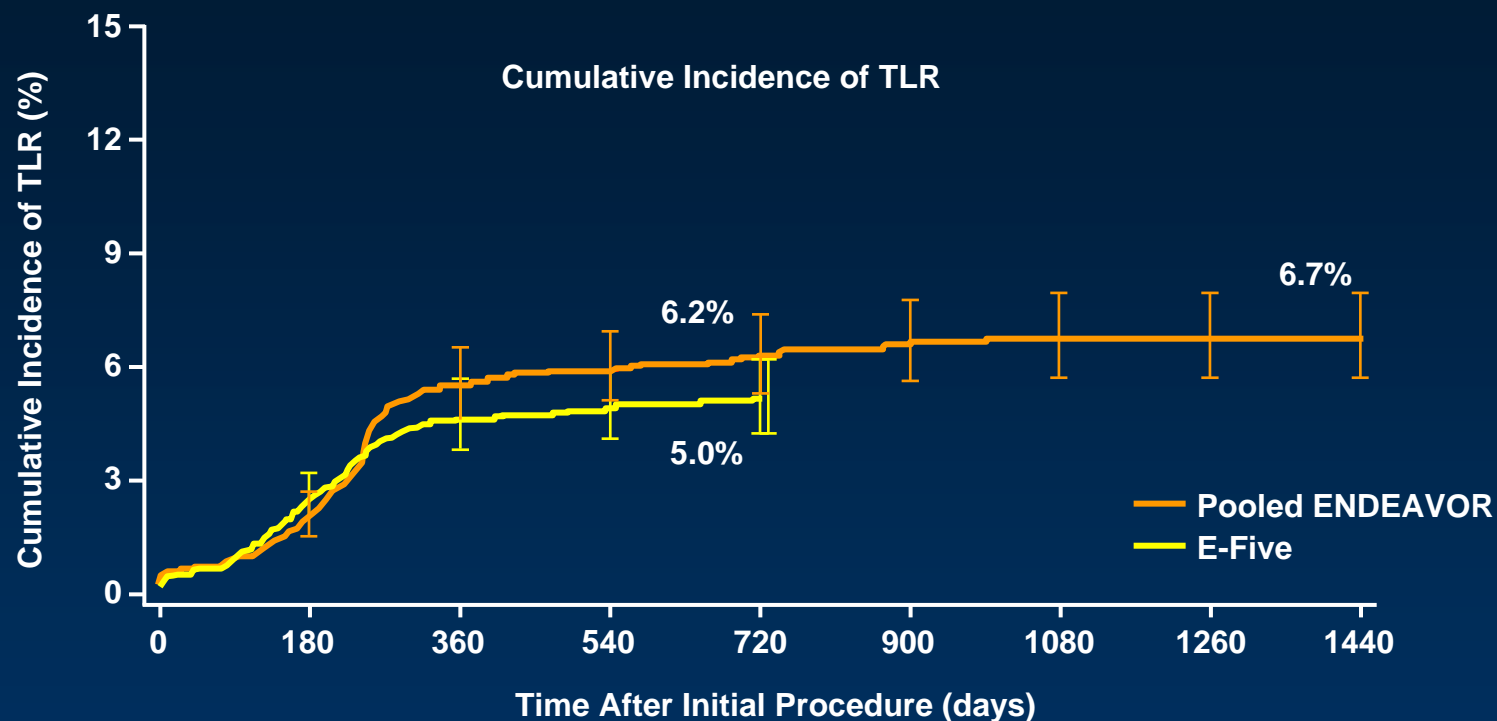


SORT OUT III Perspectives

- **Concerns with SORT OUT III Methodology:** The SORT OUT III study uses an unconventional methodology that raises questions regarding the reproducibility and viability of the results
- **Inconsistency of Data for Cypher:** SORT OUT III shows unexpectedly low rates and inconsistent data for Cypher compared with nearly every other trial utilizing the Cypher stent
- **SORT OUT III Results Are Short-Term Only:** The long-term deficiencies of Cypher demonstrated in multiple studies are not addressed by the short-term focus of SORT OUT III
- **Consistency of Data for Endeavor:** While the SORT OUT III data are inconsistent for Cypher, the Endeavor outcomes in SORT OUT III reinforce the low and durable event rates for the Endeavor stent

Endeavor: Durable TLR Rates

Real-World Experience Consistent with Pooled Analysis

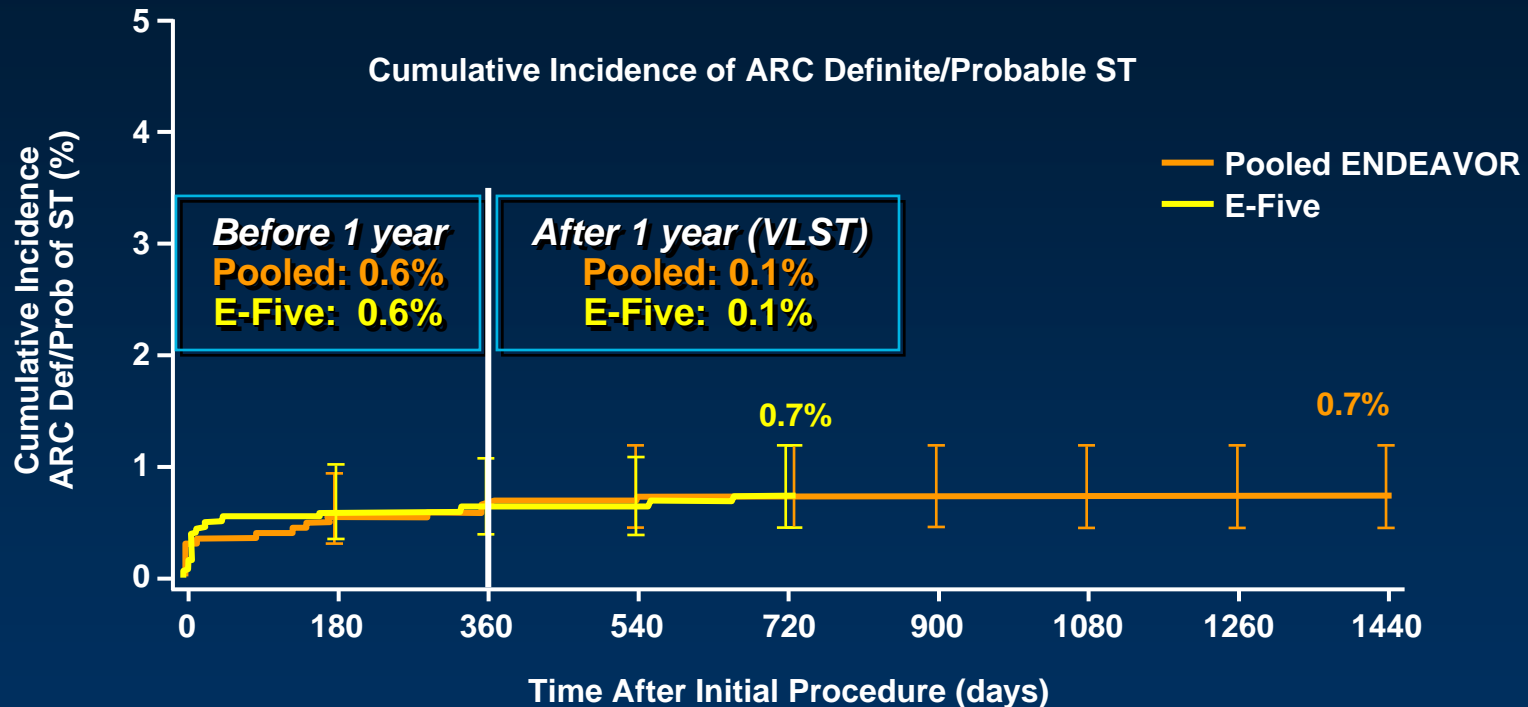


Days	0	180	360	540	720	730	900	1080	1260	1440
No. at Risk	2133	2130	2061	1939	1895	1557	1169	1150	1015	858
% CI	0.1	1.8	5.4	5.8	6.2	6.2	6.5	6.7	6.7	6.7
No. at Risk	2116	2113	2046	1974	1924	1816				
% CI	0.0	2.3	4.5	4.8	5.0	5.0				

ENDEAVOR Pooled Analysis: E I (5 yr), E II (4 yr), E II CA (4 yr), E III (3 yr), E IV (2 yr) and E pK (2 yr).
The 2-year follow-up rate for Pooled Analysis was measured at 720 days and for E-Five at 730 days.

Endeavor: Low Rates of ARC Def/Prob ST

Real-World Experience Consistent with Pooled Analysis



Days	0	180	360	540	720	730	900	1080	1260	1440
No. at Risk	2133	2131	2089	2036	1995	1650	1241	1225	1087	909
% CI	0.0	0.5	0.6	0.7	0.7	0.7	0.7	0.7	0.7	0.7
No. at Risk	2116	2113	2086	2060	2014	1906				
% CI	0.0	0.6	0.6	0.6	0.7	0.7				

ENDEAVOR Pooled Analysis: E I (5 yr), E II (4 yr), E II CA (4 yr), E III (3 yr), E IV (2 yr) and E pK (2 yr).
 The 2-year follow-up rate for Pooled Analysis was measured at 720 days and for E-Five at 730 days.

Medtronic Vascular
3576 Unocal Place
Santa Rosa, CA 95403 USA
Tel: +1.707.525.0111
www.Medtronic.com
www.EndeavorStent.com

Medtronic BV
Earl Bakkenstraat 10
6422 PJ Heerlen
The Netherlands
Tel: +31.45.566.8000
Fax: +31.45.566.8668