



Resolute Integrity

Zotarolimus-Eluting Coronary Stent System



Performance in Diabetics

RESOLUTE Pooled Analysis

*Independent, Italian All-Comers Registry from the
RISICO Study Group*

Resolute Integrity DES: Performance in Diabetics

Summary

- Strong performance in diabetics in the RESOLUTE clinical program
 - No significant difference in TLF rates in diabetics vs. nondiabetics
 - Low 3.3% TLR rate at 12 months
 - Low 0.3% ARC definite/probable stent thrombosis rate at 12 months
- Strong performance in real-world diabetics in independent, investigator-initiated study
 - Nonsignificantly different rates in diabetics vs. nondiabetics at 15 months
 - Low rates observed across all endpoints at 15 months
 - TLF for diabetics vs. nondiabetics (3.7% vs. 5.0%, $p = 0.97$)
 - 3.5% TLR rate in real-world diabetics

Resolute Integrity DES: The Simple Choice in Diabetics

RESOLUTE Pooled Analysis

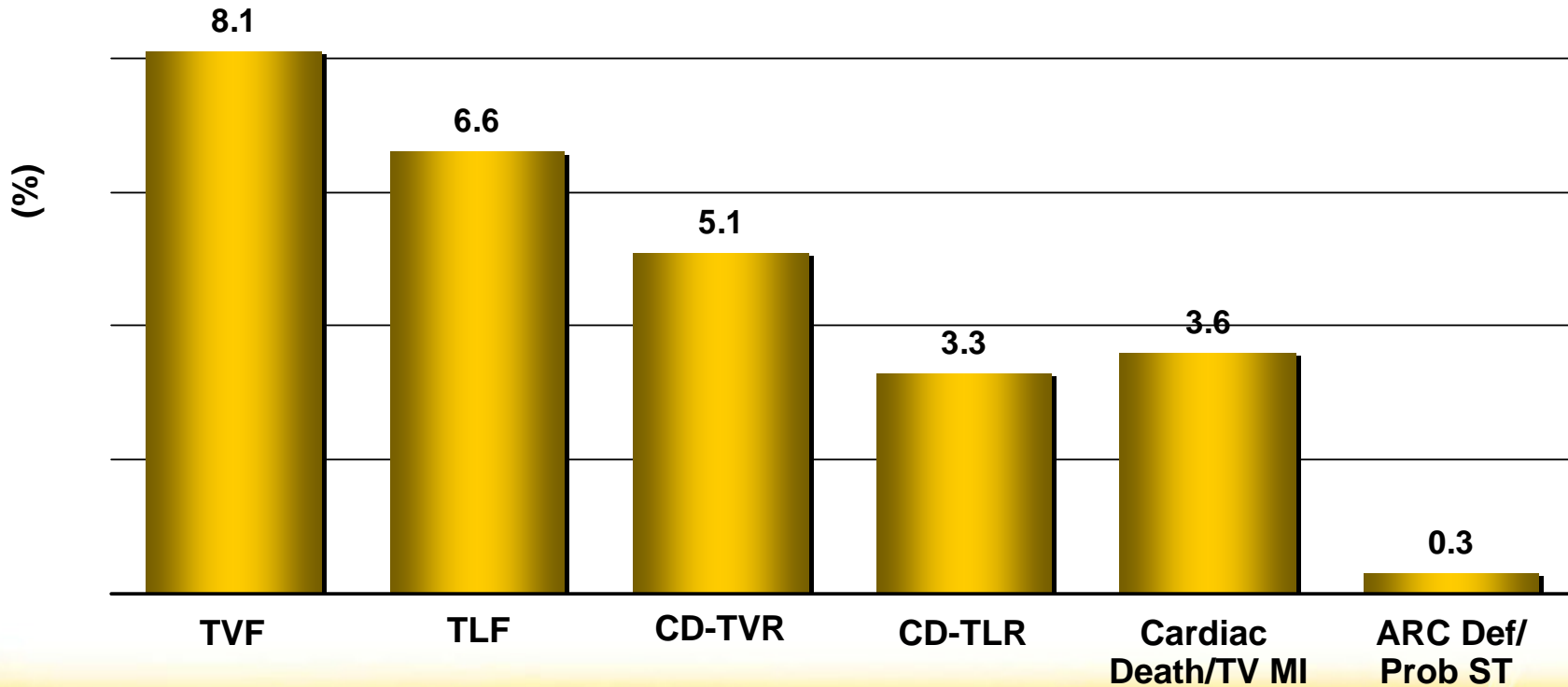
Enrollment of Resolute DES diabetic patients by clinical trial

	Diabetic Patients*
RESOLUTE	24
RESOLUTE All Comers	85
RESOLUTE International	242
RESOLUTE US	482
RESOLUTE Japan	45
Pooled RESOLUTE Dataset	878

*Only includes on-label diabetic patients for RESOLUTE pooled analysis section of this presentation. Complex patients such as bifurcation, SVG, ISR, AMI <72 hr, LVEF <30%, unprotected LM, >2 vessels stented, renal insufficiency or failure (creatinine >140 µmol/L), lesion length >27 mm, >1 lesion per vessel, lesion with thrombus or TO (preprocedure TIMI = 0) are not included in this pooled analysis. RESOLUTE trials evaluated the Resolute stent

Powerful Performance in Diabetics Across All Clinical Endpoints

RESOLUTE Pooled Analysis, 12-Month Data
n = 867



Resolute Integrity

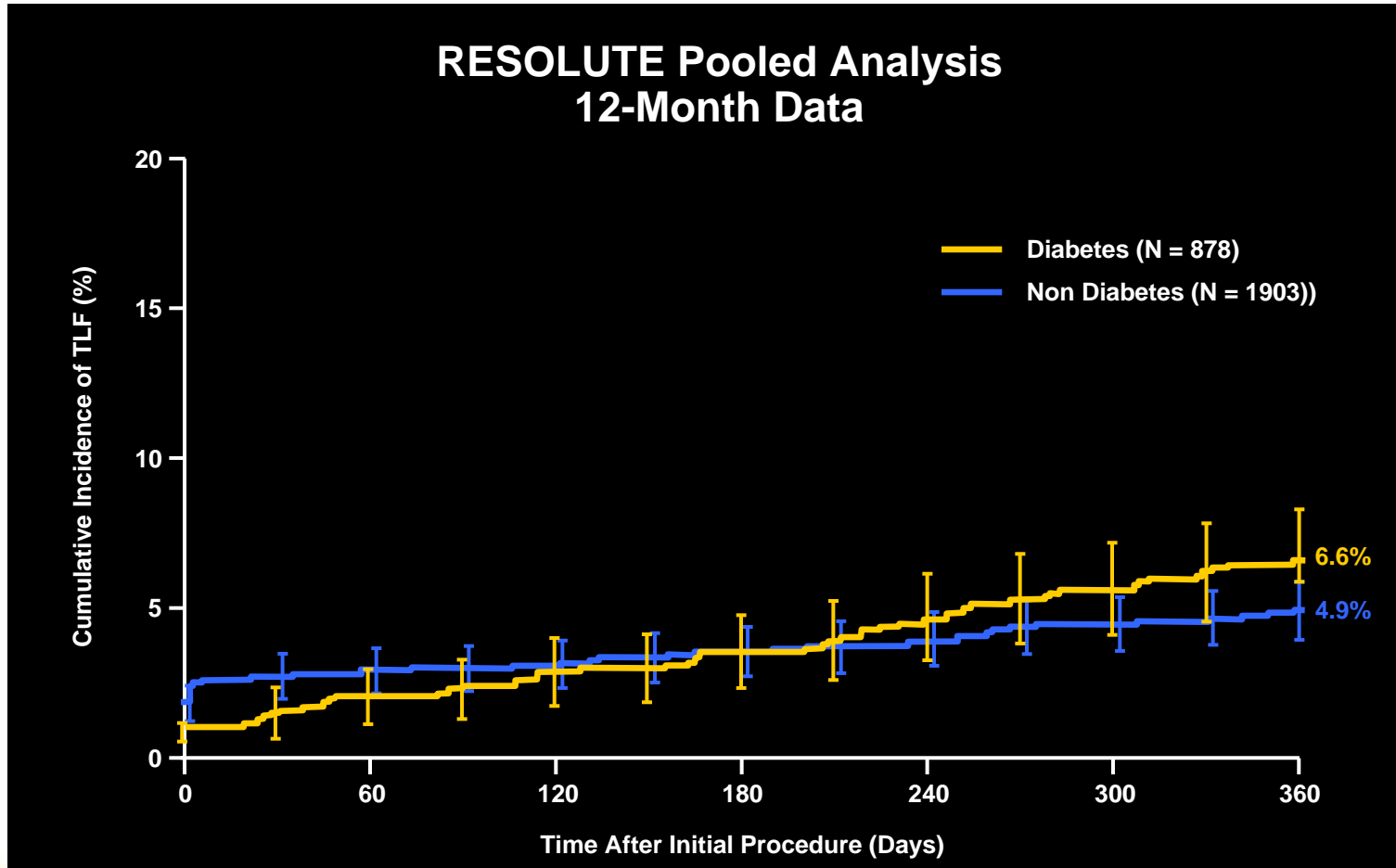
Zotarolimus-Eluting Coronary Stent System

Higher Comorbidities in Diabetic Arm

Diabetic vs. nondiabetic group in RESOLUTE pooled analysis

Baseline Characteristics	Diabetic Patients (N = 878)	Nondiabetic Patients (N = 1903)	p-Value
Age (yr)	65.2 ± 10.2	63.5 ± 10.8	<0.001
Men (%)	66.4	74.4	<0.001
History of smoking (%)	58.1	59.3	0.562
History of hypertension (%)	87.6	73.1	<0.001
Prior PCI (%)	34.6	29.5	0.007
Prior MI (%)	24.9	25.5	0.724
Prior CABG (%)	10.5	7.4	0.006
Lesion Characteristics			
B2/C lesions (%)	65.9	65.3	0.776
RVD (mm)	2.66 ± 0.48	2.73 ± 0.49	<0.001
Lesion length (mm)	13.52 ± 5.72	13.63 ± 5.86	0.627

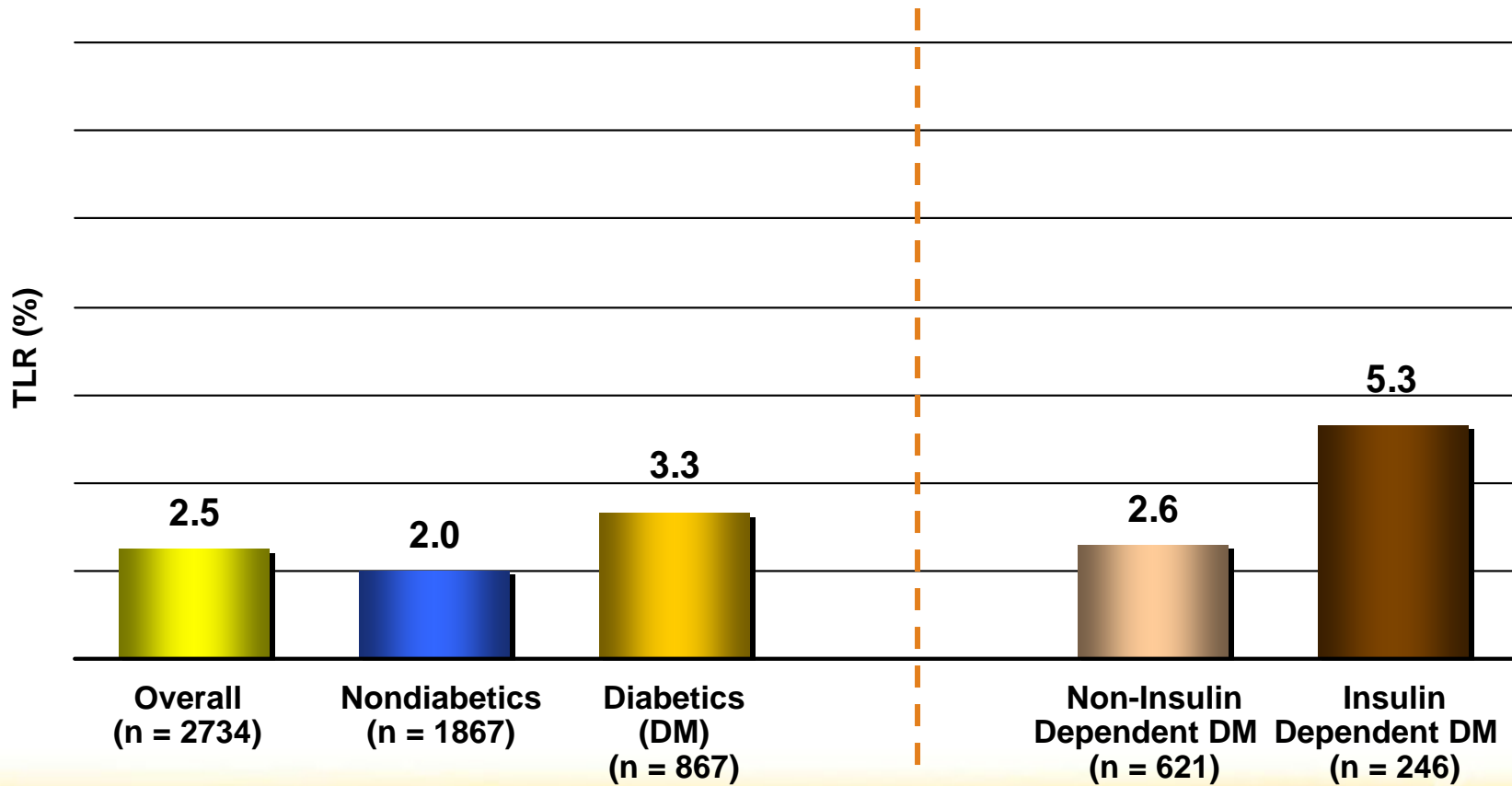
No Significant Difference in TLF Rates in Diabetics vs. Nondiabetics



Low TLR Rate in Diabetics

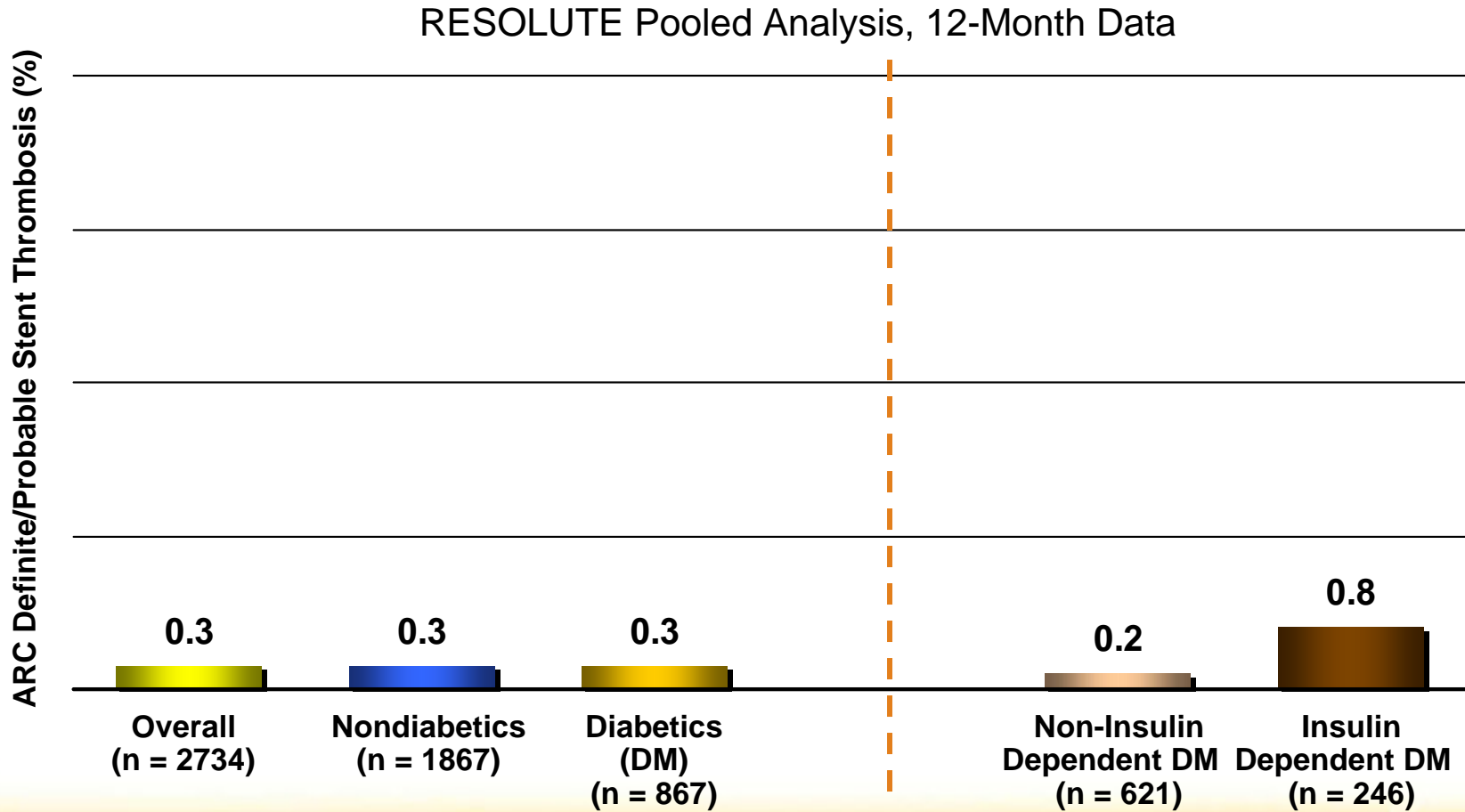
Excellent efficacy results in challenging diabetic patient group

RESOLUTE Pooled Analysis, 12-Month Data



Similar ST Rates in Diabetic vs. Nondiabetic Groups

Less than 1% ST rate even in the high-risk IDDM group





Resolute Integrity

Zotarolimus-Eluting Coronary Stent System



Clinical Outcomes in Diabetic and Nondiabetic Patients Treated with Resolute Zotarolimus-Eluting Coronary Stent

*Independent, Multicentre Italian Evaluation
A Ielasi, PCR 2011*

Diabetic vs. Nondiabetic Patients

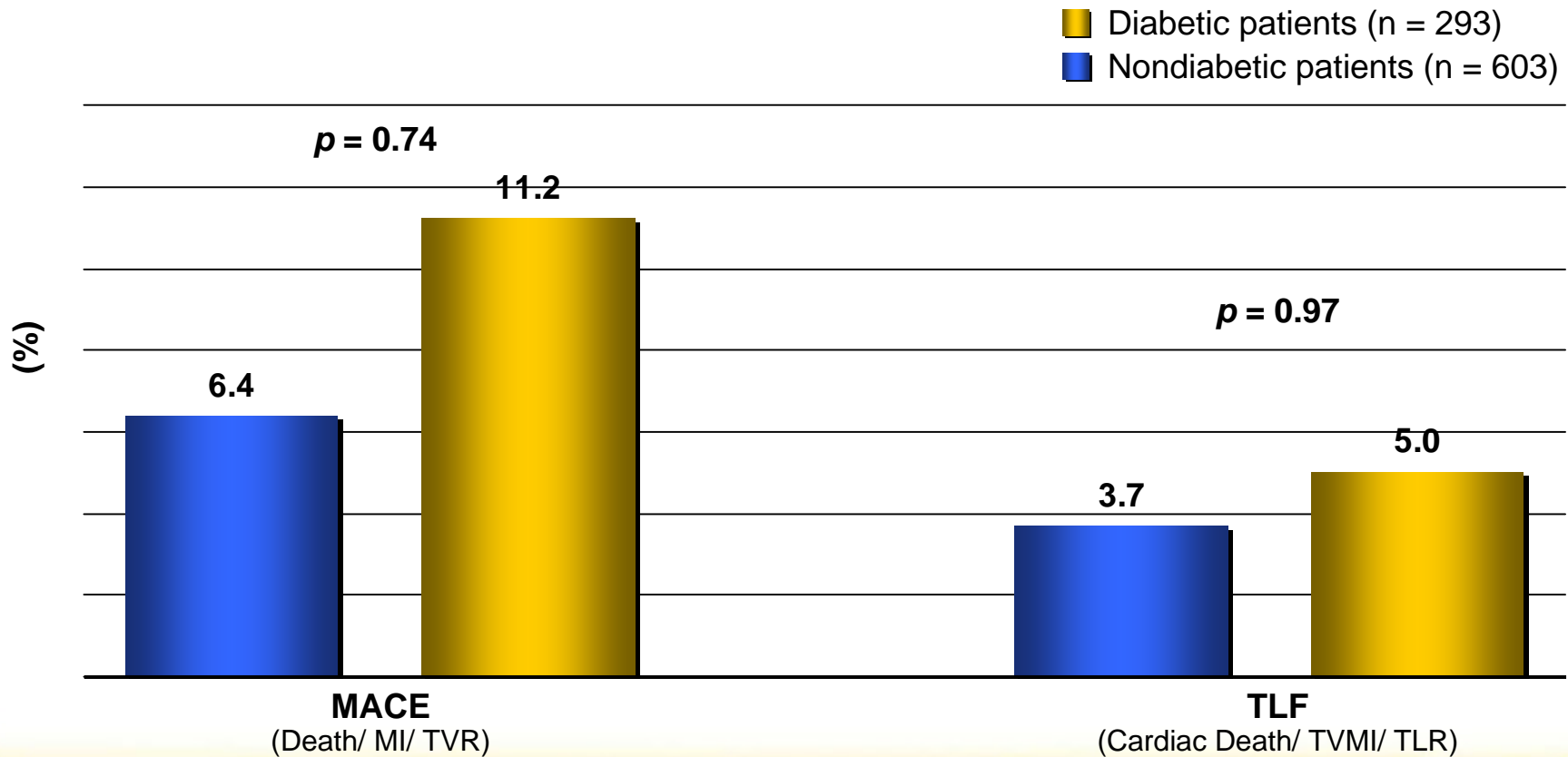
Patient and lesion baseline characteristics

	Diabetic Patients (N = 271)	Nondiabetic Patients (N = 584)	p-Value
Age (yr)	67.2±9.4	64.6±10.8	<i>p</i> < 0.0001
Hypertension (%)	87.1	72.8	<i>p</i> < 0.0001
IDDM (%)	16.4	-	-
ACS (%)	46.6	46.1	0.89
Multi-Vessel Disease (%)	23	22.3	0.80
CTO (%)	8.2	8.2	0.97
B2/C (%)	66.9	72.2	0.78
Bifurcations (%)	26.1	33.3	0.01
Left main (%)	3.4	3.8	0.69
SVG	1.7	2.3	0.50
Lesion Characteristics			
Mean stent diameter (mm)	2.9±0.5	3.0±0.4	0.002
Total stent length (mm)	28.7±17.7	26.2±14.7	0.037

Strong Performance in Diabetic, All-Comer Patients

No significant difference in diabetic vs. non diabetic group

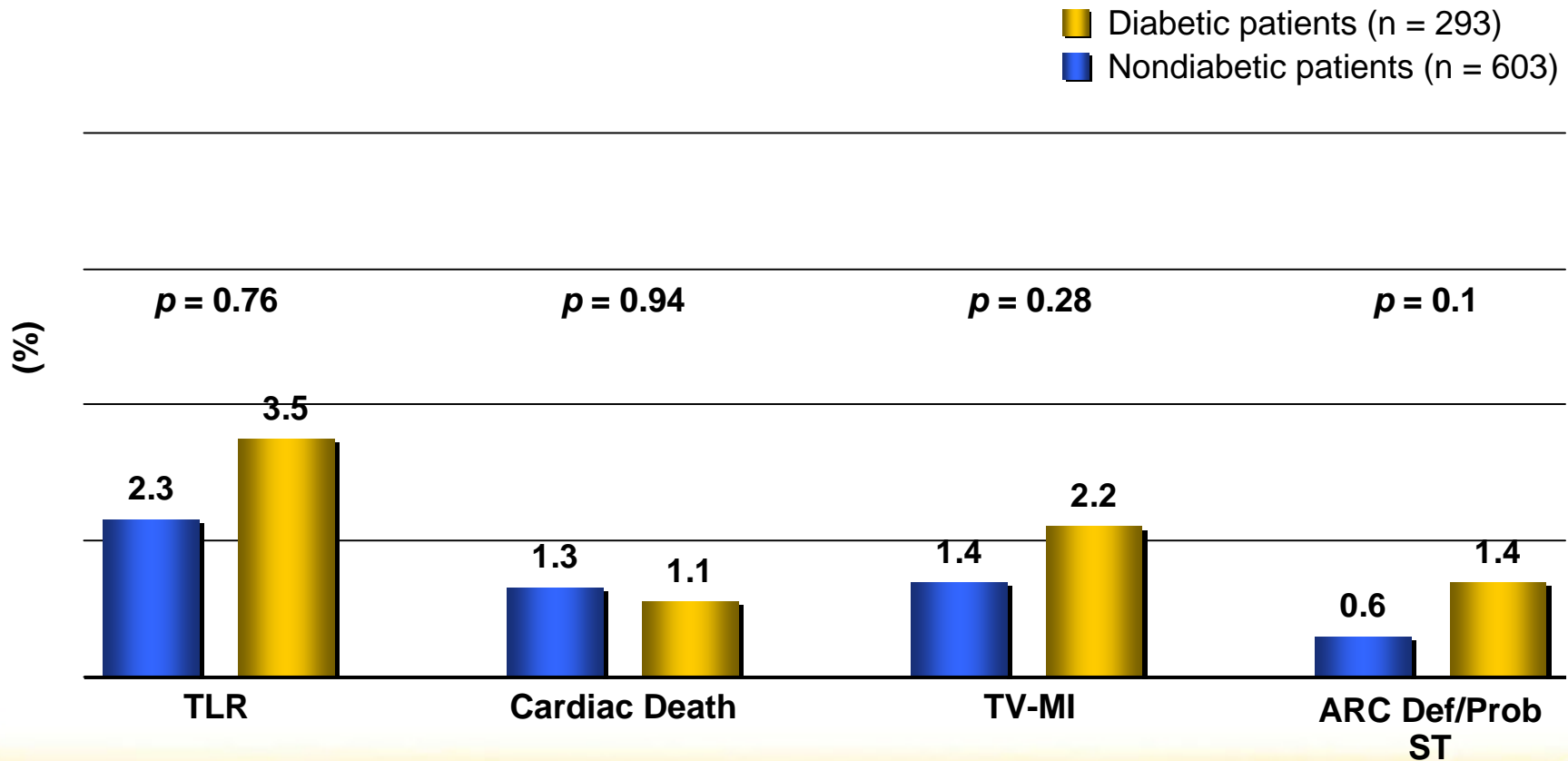
Independent, Italian All Comer Registry from the RISICO Study Group
Dr. A Ielasi et al, 15-month data



Low Rates Across All Efficacy and Safety Outcomes

No significant difference in diabetic vs. non diabetic group

Independent, Italian All Comer Registry from the RISICO Study Group
Dr. A Ielasi et al, 15-month data



Resolute Integrity DES: Performance in Diabetics

Summary

- Strong performance in diabetics in the RESOLUTE clinical program
 - No significant difference in TLF rates in diabetics vs. nondiabetics
 - Low 3.3% TLR rate at 12 months
 - Low 0.3% ARC definite/probable stent thrombosis rate at 12 months
- Strong performance in real-world diabetics in independent, investigator-initiated study
 - Nonsignificantly different rates in diabetics vs. nondiabetics at 15 months
 - Low rates observed across all endpoints at 15 months
 - TLF for diabetics vs. nondiabetics (3.7% vs. 5.0%, $p = 0.97$)
 - 3.5% TLR rate in real-world diabetics

Resolute Integrity DES: The Simple Choice in Diabetics



Resolute Integrity

Zotarolimus-Eluting Coronary Stent System



Make the Complex Simple

www.medtronic.com
www.medtronicstents.com

Europe
Medtronic Intl. Trading SARL
Route du Molliau 31
Case Postale
CH-1131 Tolochenaz
Switzerland
Tel: +(41) 21.802.7000
Fax: +(41) 21.802.7900

Asia Pacific
Medtronic Intl. Ltd.
16/F Manulife Plaza
The Lee Gardens
33 Hysan Avenue
Causeway Bay
Hong Kong
Tel: +(852) 2919.1300
Fax: +(852) 2891.6830
enquiryap@medtronic.com

Latin America
Medtronic USA, Inc.
Doral Corporate Center II
3750 NW 87th Avenue
Suite 700
Miami, FL 33178
USA
Tel: +1 (305) 500.9328
Fax: +1 (786) 709.4244

Resolute Integrity DES now has expanded indications for diabetes mellitus, multivessel disease, long lesions and small vessels.